



Your Reliable and Trustworthy Surplus Equipment Market Partner... Worldwide

Advantest T5833/32 Test System (JAD-37358)

Make: Advantest
Model: T5833 upgraded to a T5832
Quantity: 1
Vintage: 2016
Inspection: Yes

Configuration:

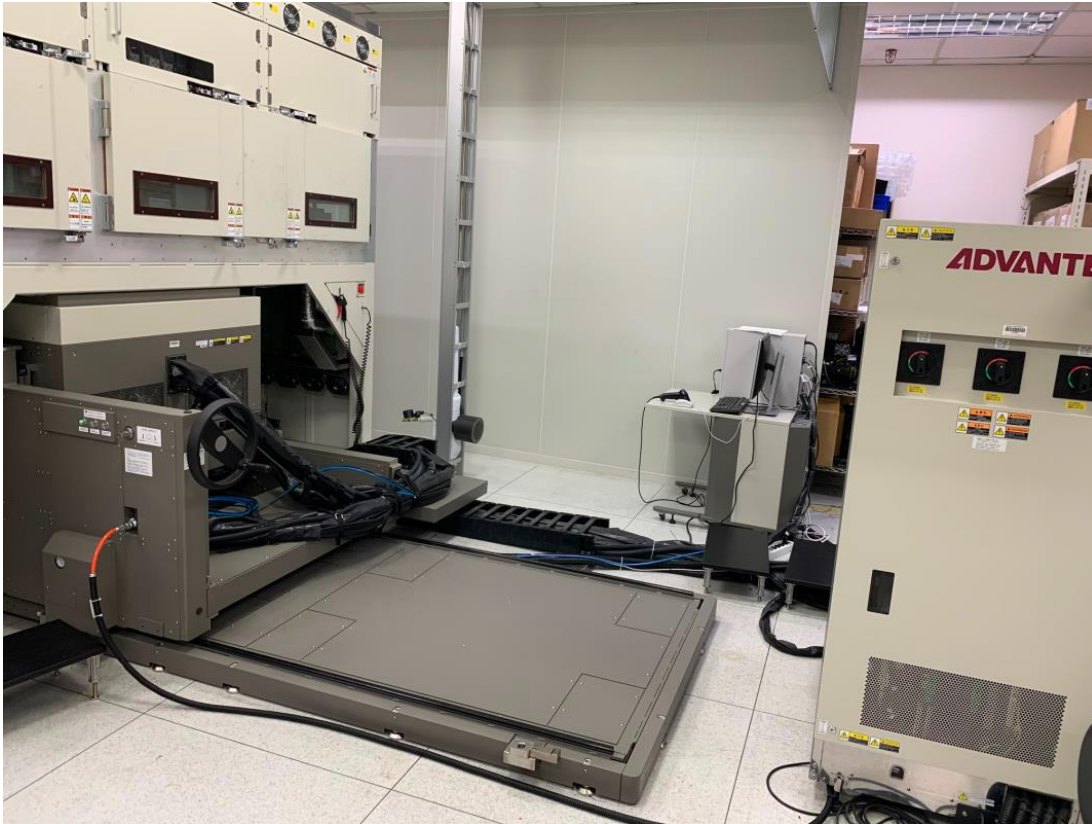
A full T5832 memory test system with the following configuration:

T5832 MEMORY TEST SYSTEM licensed at 2.8 Gbps
T5833/32 Full Configuration(32PEM/8PSM144/RCPU) ENG 11264CH

1. TEST STATION : 32PEM+8PSM144
 32PEM : 4096DR + 5120IO + 2048HCDR
 8PSM144 : 1152PPS
 FC : 288CH (128DR/160IO)
2. TEST HEAD : QSTH (Quad Satellite Test Head)
3. TEST PROCESSOR : 4 SITE CPU (MEMORY 1GB/SITE CPU)
4. TG :
 BCLK1-128 / CCLK1-128
 DRECLK1-128 / DRECLKT1-128 / STRB1-128
5. TIMING SET : 16
6. ALPG : X=24 / Y=24
7. DC : 512CH
8. PPS : 1152CH (144CH*8PSM144)
9. IN : 1-16
10. OUT : 1-16
11. VT : 1-16
12. PL : 1-16
13. FM : 128G AFM Module(PE MODULE ON-BOARD)
14. MRA : PE MODULE ON-BOARD
15. OPTION RCPU : 8 RCPU (MEMORY 8GB/RCPU)
16. TRIGGER OUTPUT TERMINAL(MB SIDE)
17. COOLING UNIT (BUILT-IN)
18. SMOKE SENSOR
19. EMO SWITCH (WITHOUT-KEY)
20. EMC/FCC Kit

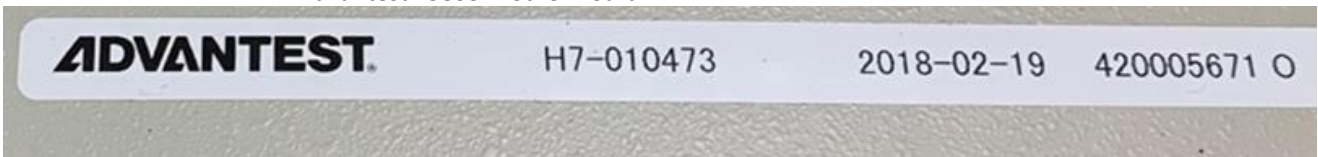
This system is configured with T5833 Motherboard part number H7-010473.

Photos:





Advantest T5833 Mother Board



JAD Group, Inc,
www.jadgrp.com

888 E. Belvidere RD, Suite 213 Grayslake, IL 60030 USA
Telephone: +1-847-223-1804